



Vermont Corporation
vermontcorp.us



¡We Are Manufacturers!

Air Distribution Products

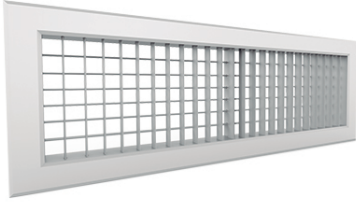
DUCTS + GRILLES + DIFFUSERS + FILTERS + FITTINGS + LOUVERS + DAMPERS



Vermont Corporation

GRILLES

Supply + Return



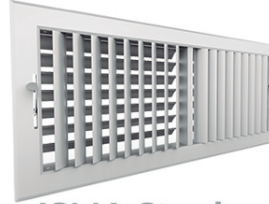
IDVL Aluminum

Double deflection aluminum grille for air supply, with individually adjustable aerodynamic blades, vertical on the front and horizontal on the back.



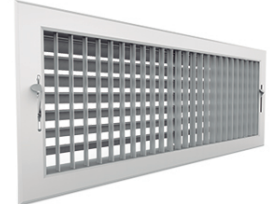
**IEVA Steel
IEVL Aluminum**

Double deflection aluminum grille for air supply, with individually adjustable straight blades, vertical on the front and horizontal on the back.



**ISMA Steel
ISML Aluminum**

Double deflection steel grille for air supply, with individually adjustable curved vertical blades on the front and a louver-type damper on the back.



**IEMA Steel
IEML Aluminum**

Double deflection grille for air supply, with individually adjustable straight blades, vertical on the front and horizontally adjustable blades with rear lever control.



**ITAA Steel
ITAL Aluminum**

Steel grille for high-volume, long-throw air supply, with individually adjustable straight vertical blades and a rotating drum for vertical adjustment.



**ID2A Steel
ID2L Aluminum**

Double deflection aluminum grille for high-volume, long-throw air supply, with 2" individually adjustable blades, vertical on the front and horizontal on the back. Includes mounting hardware. The frame is steel for added strength.



**ID3A Steel
ID3L Aluminum**

Double deflection aluminum grille for high-volume, long-throw air supply, with 3" individually adjustable aerodynamic blades, vertical on the front and horizontal on the back. Includes mounting hardware. The frame is steel for added strength.



**RPCA Steel
RPCL Aluminum**

Steel grille for air return in doors or partition panels, with fixed no-vision blades parallel to the long dimension. Includes an adjustable subframe for doors from 1-1/4" thick.



**RHFA Steel
RHFL Aluminum**

Steel grille for air return with filter holder (for 1" filter, not included) and hinged frame, with fixed curved blades parallel to the long dimension.



RCUL Aluminum

Air return with high-efficiency 1/2" x 1/2" polymer grid (provides more free area than other returns)



**RPCA Steel
RCPL Aluminum**

Steel blank access panel for ceiling, with hinged panel. For above-ceiling inspection.



**RPFA Steel
RPFL Aluminum**

Steel return grille with stamped face and filter holder. One-piece grille, removable by hinges. Option with 1" ductboard.



**R45A Steel
R45L Aluminum**

Steel grille for air return, with fixed curved blades parallel to the long dimension.



**IESA Steel
IESL Aluminum**

Double deflection steel grille for air supply, with individually adjustable straight blades, vertical on the front and horizontal on the back. The grille face adapts to the duct diameter (from 6" diameter).



IERA Steel

Double deflection steel grille for air supply, with individually adjustable straight blades, vertical on the front and horizontal on the back. The grille face is curved to fit the duct diameter.



**RT4A Steel
RT4L Aluminum**

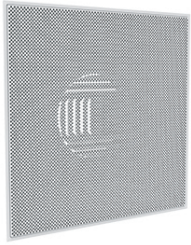
Steel grille for air return, with fixed straight punched blades, parallel to the long dimension at 45°.



Vermont Corporation

DIFFUSERS

Lay-In+Linear Slot+Ceiling+Round



**DPEA Steel
DPEL Aluminum**

Modular steel diffuser for 24 x 24 inch lay-in ceiling, with perforated front face and aerodynamic plenum box.



**DPLA Steel
DPLL Aluminum**

Modular steel diffuser for 24 x 24 inch lay-in ceiling, with front plate and aerodynamic plenum box that allows more efficient 360° air distribution.



**DPCA Steel
DPCL Aluminum**

Modular diffuser with round neck adapter and round face plate, for ceiling mounting, with thermal insulation R-4.2. 360° air pattern.



**DP2A Steel
DP2L Aluminum**

Modular steel diffuser for 24 x 24 inch lay-in ceiling, with two stamped front deflectors that distribute air in a 360° pattern.



**DP3A Steel
DP3L Aluminum**

Modular steel diffuser for 24 x 24 inch lay-in ceiling, built with three stamped front deflectors that distribute air in a 360° pattern.



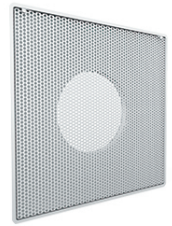
**DPTA Steel
DPTL Aluminum**

Modular steel diffuser for 24 x 24 inch lay-in ceiling, built with an innovative design, featuring a stamped front deflector that creates a vortex-type airflow for faster and more efficient mixing of cold air.



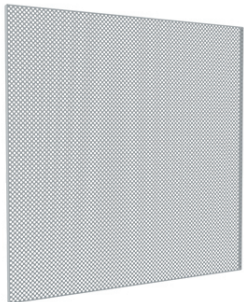
**DPFA Steel
DPFL Aluminum**

Modular steel diffuser for 24 x 24 inch lay-in ceiling, manufactured with a series of concentric square deflectors for 4-way air distribution.



**RPEA Steel
RPEL Aluminum**

Modular steel return for 24 x 24 inch lay-in ceiling, with perforated front face, one-piece aerodynamic plenum box, and round neck for flexible duct connection.



**RPPA Steel
RPPL Aluminum**

Full modular perforated return for 24 x 24 inch lay-in ceiling, made of steel with perforated mesh, without plenum or neck. Aluminum option available, Mod. RPPL.



**RPEP Polystyrene-Steel
RPEQ Polystyrene-Aluminum**

Modular return for 24 x 24 inch lay-in ceiling, with steel perforated front mesh (model RPEP) or aluminum (model RPEQ), aerodynamic plenum made of thermal insulation polystyrene R-4.2, and round neck for flexible duct connection.



**D4VA Steel
D4PA Steel**

Fixed diffuser, fully made of steel, with a removable core for easy installation and beveled frame (D4VA) or flat frame (D4PA).



**DA4A Steel
DA4L Aluminum**

DA4A – Steel high-velocity diffuser with curved blades, featuring individually adjustable blades (aluminum option, model DA4L).



Vermont Corporation

DIFFUSERS

Lay-In+Linear Slot+Ceiling+Round



**DCPA Steel
DCPL Aluminum**

Round diffuser with round neck for spiro or flexible duct connections. Sturdy baffle can be rotated to fully close. Fixed 360° air distribution pattern.



**DCRA Steel
DCRL Aluminum**

Modular steel diffuser DCRA and aluminum DCRL with 24" circular frame, circular front baffle, aerodynamic plenum for more efficient 360° air distribution, and round neck for flexible duct connection.



**DCCA Steel
DCCL Aluminum**

Steel round diffuser with a set of concentric deflectors, providing 360° radial air supply. Its elegant design makes it ideal for low-volume air supply installations.



**DCFA Steel
DCFL Aluminum**

Round diffuser made of steel with 2 conical deflectors, providing 360° radial air supply for high volume



**DCVA Steel
DCVL Aluminum**

Variable volume round diffuser made of steel with 3 conical deflectors, providing 360° radial air supply for high volume, with gradually adjustable vertical air discharge angle.



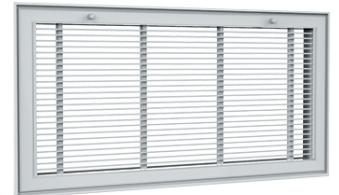
**DCJA Steel
DCJL Aluminum**

Jet-type diffuser or injector with a series of adjustable concentric circles for high air volume, fully made of steel. Equipped with two axes to precisely direct the airflow.



**DCEA Steel
DCEL Aluminum**

Adjustable spherical round diffuser with discharge opening. Its design allows precise airflow direction to the desired area. Optional damper available to regulate air volume.



**RF3A-RF5A Steel
RF3L-RF5L Aluminum**

Perimeter return with steel filter holder for air supply, with fixed straight longitudinal blades. Blade spacing of 3/8" (model RF3A) and 1/2" (model RF5A). Aluminum options available, models RF3L or RF5L.



**DLAA-DLBA-DLCA Steel
DLAL-DLBL-DLCL Aluminum**

Linear slot diffuser for air supply, built with horizontal longitudinal blades on the front. Aluminum option available, models DLAL-DLBL-DLCL.



**DF3A-DF5A Steel
DF3L-DF5L Aluminum**

Perimeter grille for air supply, made of steel, with straight longitudinal blades parallel to the long dimension, 1/2" spacing (model DF5) or 3/8" spacing (model DF3). Aluminum options available, models DF5L or DF3L.



Vermont Corporation

FILTERS

Residential + Industrial + Hospital



FML

Washable metal filters. These units are designed to filter dust suspended in the air, and their construction provides high rigidity and excellent durability. They can be reused for up to 6 months by simply washing them (depending on usage conditions)



FPL

Disposable pleated filters. These filters have an efficiency of up to 45% (MERV 8) and are made with high-quality materials in both the filter media and the frames.



FDF

Disposable fiberglass filters, designed with progressive density filter media. The density increases as airflow moves from the inlet side to the outlet side, forming a higher-density layer that helps capture more dust.



FDP

Disposable polyester fiber filters, designed with synthetic filter media that helps retain a greater amount of dust.



FPM

Vermont MERV 13 pleated filters are extended-surface filters with pleats that provide maximum dust retention and longer service life. These high-efficiency filters significantly reduce building maintenance costs by protecting HVAC equipment from harmful dirty air.



FB9

Extended surface bag filter, designed for use in many types of systems that require medium to high filtration efficiency.



FGR

Washable grease filters, made with aluminum filter media in progressive density layers, providing improved filtration.



FEL

Washable electrostatic filter with synthetic filter media that becomes electrostatically charged as air passes through, allowing dust to be captured more efficiently.



FPC

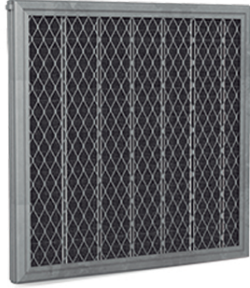
Polycarbon filter, made with polyester fiber and activated carbon media, designed to eliminate odors in air conditioning systems.



Vermont Corporation

FILTERS

Residential + Industrial + Hospital



FCG

Granulated carbon filters, easy to install, that purify the air as it passes through in demanding filtration applications.



FPT

Polytack filters, made of progressive-density polyester fiber media in layers, bonded to an internal steel rod frame for structural support.



FHE

High-efficiency absolute filters, designed for use in systems where clean, particle-free environments are required.



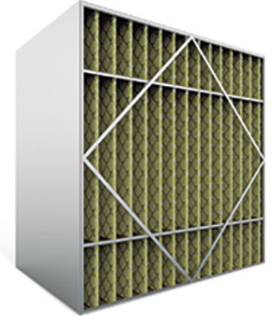
MPF

Filter holding frames used to build filter banks for air supply or exhaust, using filter media or metal filters



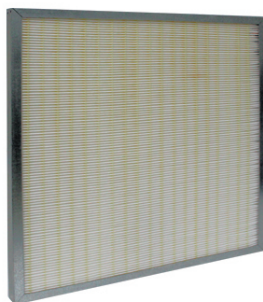
FBA

Made of galvanized steel or aluminum, these 2" thick baffle-type filters contain two layers of material, either galvanized steel or aluminum, forming evenly spaced baffles.



FRI

Rigid pleated filters with micro-fine synthetic media, galvanized sheet metal frame, synthetic fiber media, and pleated separators with folded edges.



MINIPLEAT

High-efficiency filter for commercial and industrial air purification equipment, MERV 13, with low airflow resistance. Its nano-tech filter media provides three times more resistance and high dust holding capacity. Maximum operating temperature: 75 °C.



Vermont Corporation

DAMPERS + LOUVERS

Square + Round



CBLA Steel
CBLA Aluminum

Gravity or barometric damper, made of steel with L-frame and 3" blades, designed to operate by airflow pressure, lifting the blades and allowing air to pass in one direction only.



CRHA Steel

Rectangular galvanized steel damper, with mounting support for electric actuator (actuator not included). Reinforced hardware allows easy and practical simultaneous opening and closing of opposing 3" blades, with bushings on each shaft. Includes side seal and foam seal between blades.



CBSA Steel

Barometric damper with L-frame, made of steel with 3" aluminum blades, designed to operate by airflow pressure, lifting the blades and allowing air to pass in one direction only.



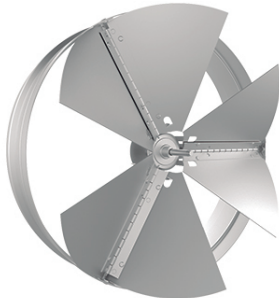
CRI

Rectangular fire damper, fully made of galvanized steel, including a UL LISTED safety fusible link rated at 165°F (73.8°C) and an automatic closing spring.



COVA Steel
COVL Aluminum

Opposed blade volume control, simultaneously operated by a lever that can be easily adjusted from the grille or diffuser face without special tools.



CVX

Round opposed blade volume control with multiple blades and gradual adjustment, operated by a simultaneous movement screw, adjustable from the front using a screwdriver.



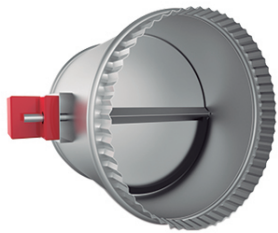
CVM

Round galvanized steel butterfly damper, with two opposed blades and simultaneous movement through a gradual adjustment screw.



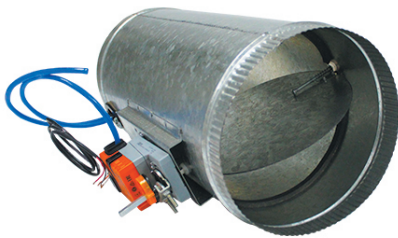
CCOIC

Round fire damper made of galvanized steel, including a UL LISTED safety fusible link rated at 73.8°C (165°F) and an automatic closing spring.



COREC

Reinforced round galvanized steel damper with circumferential neoprene seal and provision for electric actuator (actuator not included).



CAVV

Round variable air volume box made of 22-gauge galvanized steel, with Belimo electronic actuator for pressure-independent VAV box, 45 in-lb (5 Nm) for 8" and 10" diameters, and 90 in-lb (10 Nm) for 12" diameter.



LD4A Steel
LD4A Aluminum

Ventilation louver with L-frame, featuring fixed horizontal blades spaced at 4" and mounted on a 4" frame. Its design allows rainwater to drain through the ends and discharge outward.



LA4A Steel
LA4L Aluminum

Galvanized steel louver with adjustable horizontal blades, simultaneous movement by lever, mounted on a 4" frame with optional 6". Includes expanded galvanized steel bird screen.



Vermont Corporation

FITTINGS

Round+Oval+Rectangular



NIPLC

Round galvanized sheet metal nipple for duct interconnection



COPLC

Galvanized sheet metal coupling for duct interconnection and/or fastening. Available in sizes from 4" to 60".



BRIDC

Round flanged duct connection made of galvanized steel.



NDFMC

Galvanized sheet metal nipple for flexible duct interconnection.



RCO1C

Concentric round reducer (centered inlet and outlet)



REX2C

Eccentric round reducer, recommended according to duct diameter.



RDC1C

Concentric round reducer (centered inlet and outlet), reduced to 7-1/2" length, with internal dimensions.



INC4C

Round connection with a 45° branch from the main duct.



INC9C

Round connection with a 90° branch from the main duct.



INC9R

Round connection with a 90° rectangular branch from the main duct.



INCZC

Round connection with a 90° round boot branch from the main duct.



IML4C

45° round half-moon branch.



CRC9C

Round duct section with 2 side branches at 90°



CRC4C

Round cross with opposite circular outlets at 45° from the main duct



CRC9R

Round cross with opposite rectangular outlets at 90° from the main duct.



CRCZR

Round cross with opposite rectangular boot outlets at 90° from the main duct.



COD4C

Round galvanized sheet metal elbow for 45-degree direction changes.



COD9C

Round galvanized sheet metal elbow for 90-degree direction changes.



CODUC

Adjustable round galvanized sheet metal universal elbow for 0° to 90° direction changes.



YEORC

Round galvanized sheet metal "Y" to split airflow into two directions at 45° opposite each other.



Vermont Corporation

FITTINGS

Round+Oval+Rectangular



IML9C

90° round half-moon galvanized sheet metal branch.



TAPAC

Round galvanized sheet metal cap



CAZ9C

Round galvanized sheet metal boot at 90° from the main duct.



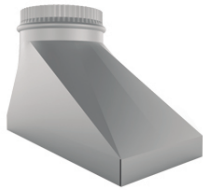
CAS4C

Round galvanized sheet metal boot at 45° from the main duct.



TRC1C

Concentric galvanized sheet metal transition to convert the rectangular equipment outlet to a round system..



TRE2C

Rectangular-to-round eccentric (tangentially aligned) galvanized sheet metal transition.



ADAPR

Rectangular-to-round galvanized sheet metal adapter



MARPC

Round butterfly coupling.



SFLEX

Galvanized sheet metal support for flexible duct.



COMPC

Round galvanized sheet metal damper with circumferential seal and graduated quadrant for air volume adjustment.



CONCC

Round galvanized sheet metal connector with damper, used for air volume adjustment.



GORCC

Round Chinese hat-type cover.



COEXC

Round galvanized sheet metal barometric damper for wall, with neck and expanded mesh.



GOROC

UFO-type cap with side protection.



CMI4R

Galvanized sheet metal multi-outlet injection box with 4-way outlet.



CMI6R

Galvanized sheet metal multi-outlet injection box with 6-way outlet.



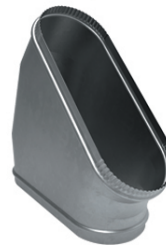
CA450

Oval galvanized sheet metal boot at 45 degrees.



TAPAO

Galvanized sheet metal cap for oval duct



COH40

Horizontal oval galvanized sheet metal elbow at 45 degrees.



COV30

Vertical oval galvanized sheet metal elbow at 30 degrees



Vermont Corporation

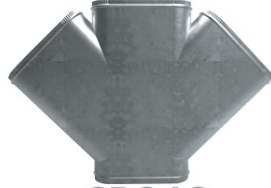
FITTINGS

Round+Oval+Rectangular



CRO9C

Oval galvanized sheet metal cross with opposite circular outlets at 90° from the main duct.



CRO40

Oval galvanized sheet metal cross with opposite oval outlets at 45° from the main duct.



INO40

Oval galvanized sheet metal cross with opposite circular outlets at 90° from the main duct.



INO9R

Oval galvanized sheet metal connection with a 90° rectangular branch from the main duct.



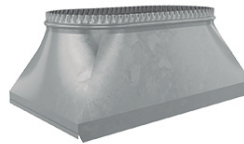
INO9C

Oval galvanized sheet metal connection with a 90° round branch from the main duct.



RCO10

Reducción oval concéntrica (entrada y salida centrada).



TRC1R

Transformación de oval a rectangular de lámina galvanizada.



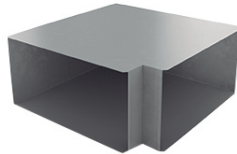
NIP60

Nipple with 6" width.



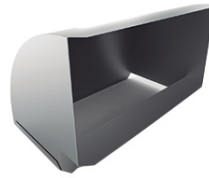
FCOPO

Nipple with flange.



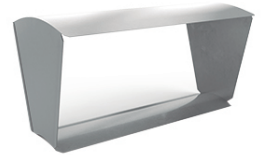
CHA9R

Horizontal rectangular galvanized sheet metal elbow at 90 degrees, Pittsburgh-seamed.



CVB9R

Vertical rectangular galvanized sheet metal elbow at 90 degrees, Pittsburgh-seamed.



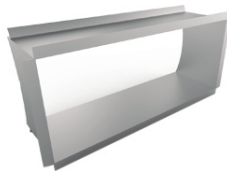
CVC3R

Vertical round-to-round elbow at 30°, Pittsburgh-seamed.



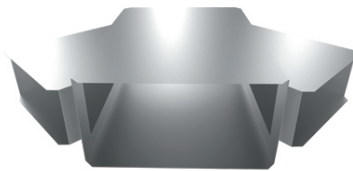
NIPLR

Rectangular nipple.



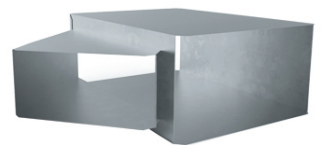
CAD9R

Rectangular boot at 90 degrees for connection to a round duct.



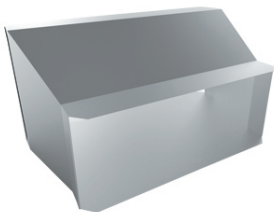
CRR4R

Rectangular galvanized sheet metal cross with opposite rectangular outlets at 45° from the main duct, Pittsburgh-seamed. Supplied disassembled.



INR4R

Rectangular galvanized sheet metal connection with a 45° branch from the main duct.



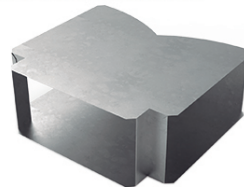
REX2R

Rectangular galvanized sheet metal eccentric reducer.



GRAP / ZETA

Galvanized sheet metal U-shaped profile, Pittsburgh-seamed, used for vertical joining of ducts and/or rectangular Pittsburgh-type connections in air distribution systems.



TEORR

Rectangular galvanized sheet metal tee.



CALAR

Rectangular galvanized sheet metal box with circular neck for flexible duct connection, insulated with fiberglass, for linear diffuser installation.



Vermont Corporation

DUCTS



SLC

Round galvanized steel duct, spiral-seamed smooth. Beaded and crimped on one end



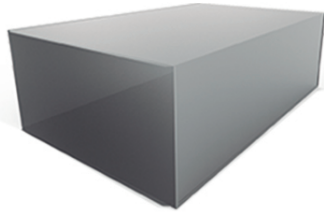
SRC

Round galvanized steel duct, spiral-seamed with three reinforcement beads.



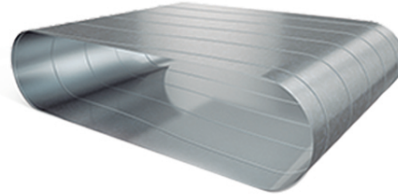
SNAP

Circular duct with longitudinal lock. Beaded and crimped on one end, and beaded on the other end



DRPPR

Rectangular galvanized steel duct with longitudinal Pittsburgh or snap button lock (unassembled, in L) and transverse assembly with clip and zeta.



SLO

Flat oval galvanized steel duct, spiral-seamed smooth.



Vermont Corporation

14526 Garfield Ave.

Paramount, CA 90723

(562) 551-2699

vermontcorp.us